



Wellsaw

Model 1270

Parts List Supplement

Beginning Serial Number 2215

**Supplement to: Operation and Maintenance Manual
Model 1270 beginning serial number 1958**

Always provide parts department with the model and
Serial number when ordering service parts.

New Features

1-1/4" Blade

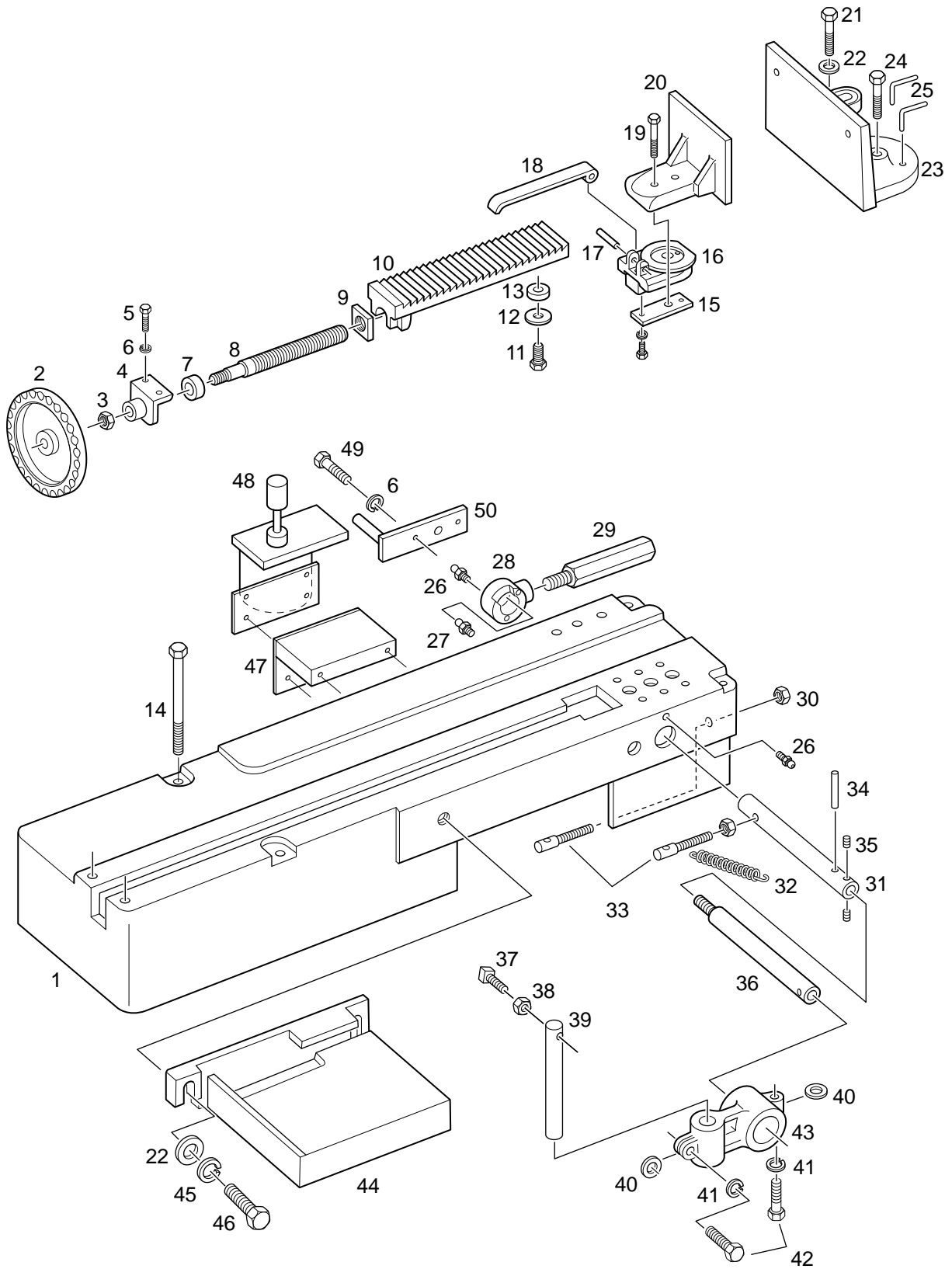
5 HP Blade Drive Motor

Variable Speed Blade Drive

Spring Loaded Carbide Guides with Rollers

Rite Tension[®] Blade Tensioner

Bed Assembly

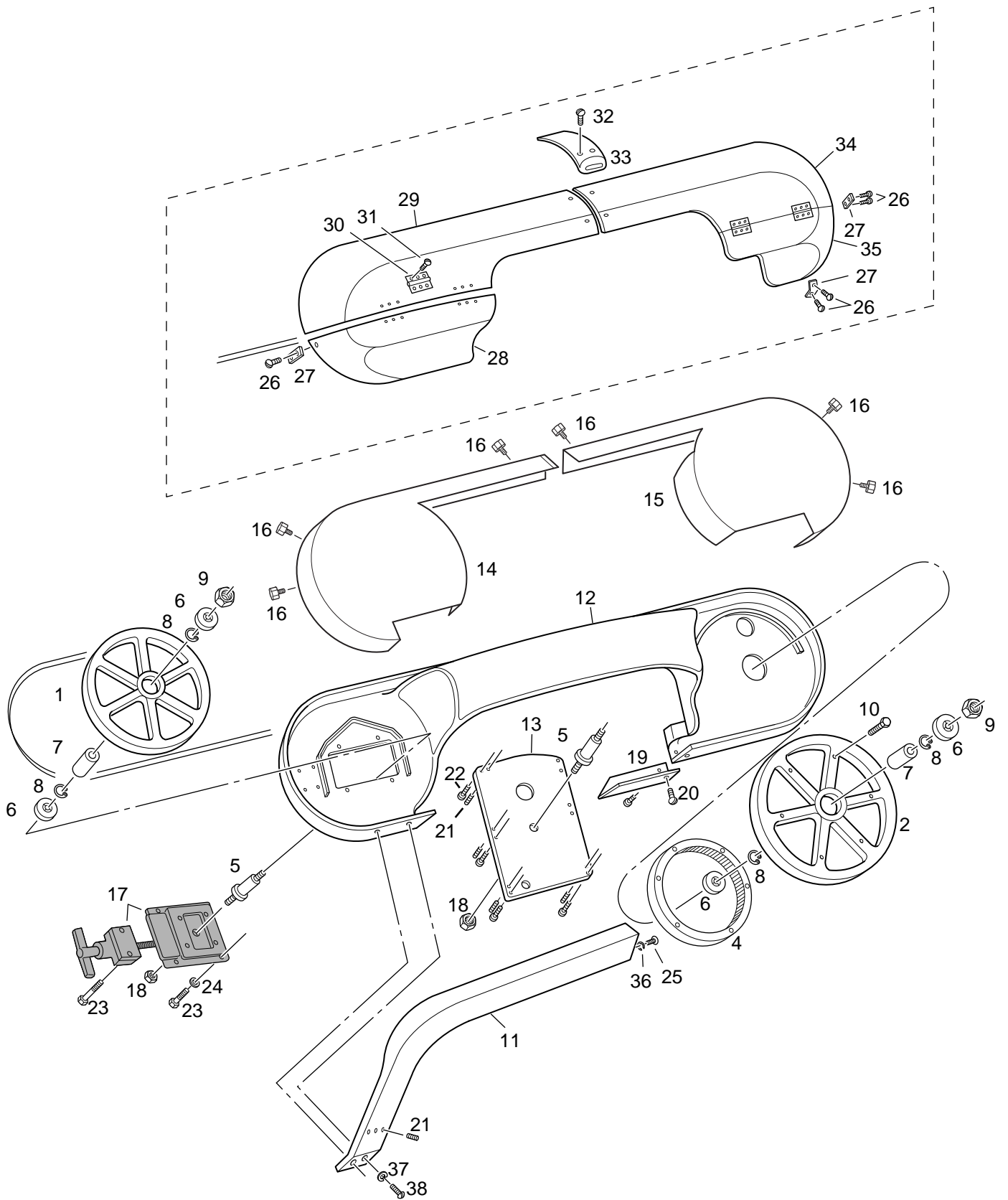


M1270 Bed & Vise

Bed Assembly

1	106101	Bed
2	B-093	Hand Wheel
3	100019-008	Hex Jam Nut, 3/4-10
4	M-076	Vise Screw Bracket
5	100004-015	Cap Screw, HH, 5/16-18 x 3/4
6	100025-002	Lock Washer, 5/16
7	100402	Thrust Collar
8	M-060	Vise Screw
9	M-061B	Vise Screw Nut
10	F-005	Vise Ratchet
11	100004-020	Cap Screw, HH, 5/16-18 x 1-1/4
12	F-178	Vise Ratchet Washer
13	F-179	Vise Ratchet Guide Spool
14	100004-111	Cap Screw, HH, 1/2-13 x 8
15	F-177	Vise Slide Block Guide
16	F-006	Slide Block
17	100053-002	Roll Pin, 3/8 x 2
18	F-031	Vise Ratchet Dog
19	100004-049	Cap Screw, HH, 3/4-10 x 4
20	F-003	Moveable Vise Jaw
21	100004-042	Cap Screw, HH, 5/8-11 x 2
22	100029-008	Flat Washer, 5/8
23	F-001	Fixed Vise Jaw
24	100004-048	Cap Screw, HH, 3/4-10 x 3
25	M-065	Locating Pin
26	100243-001	Grease Fitting
27	101960	Stock Stop Stud
28	106103	Stock Stop Cam
29	101962	Lever
30	100017-003	Hex Nut, 3/8-16
31	106102	Stock Stop Bar
32	101234	Frame Spring
33	101233	Adjusting Screw
34	100053-001	Roll Pin, 7/32 x 2-1/2
35	100034-003	Set Screw, Cup Point, 5/16-18 x 3/8
36	106105-001	Stock Stop Extension Bar, 2 x 13-1/2
37	100033-016	Set Screw, Square Hd., 5/8-11 x 4
38	100019-007	Hex Jam Nut, 5/8-11
39	106107	Stop Arm
40	100030-007	Flat Washer, 1/2 SAE
41	100025-005	Flat Washer, 1/2 USS
42	100008-032	Cap Screw, SH, 1/2-13 x 1-1/2
43	106106	Stop Arm Bracket
44	F-011	Tip Off Block
45	100025-007	Lock Washer, 5/8
46	100004-041	Cap Screw, HH, 5/8-11 x 1-1/2
47	106028	Cylinder Mounting Plate (1270A)
48	100299-014	Air Cylinder (1270A)
49	100004-023	Cap Screw, HH, 5/16-18 x 2
50	106031	Lever Bar (1270A)

Frame Assembly

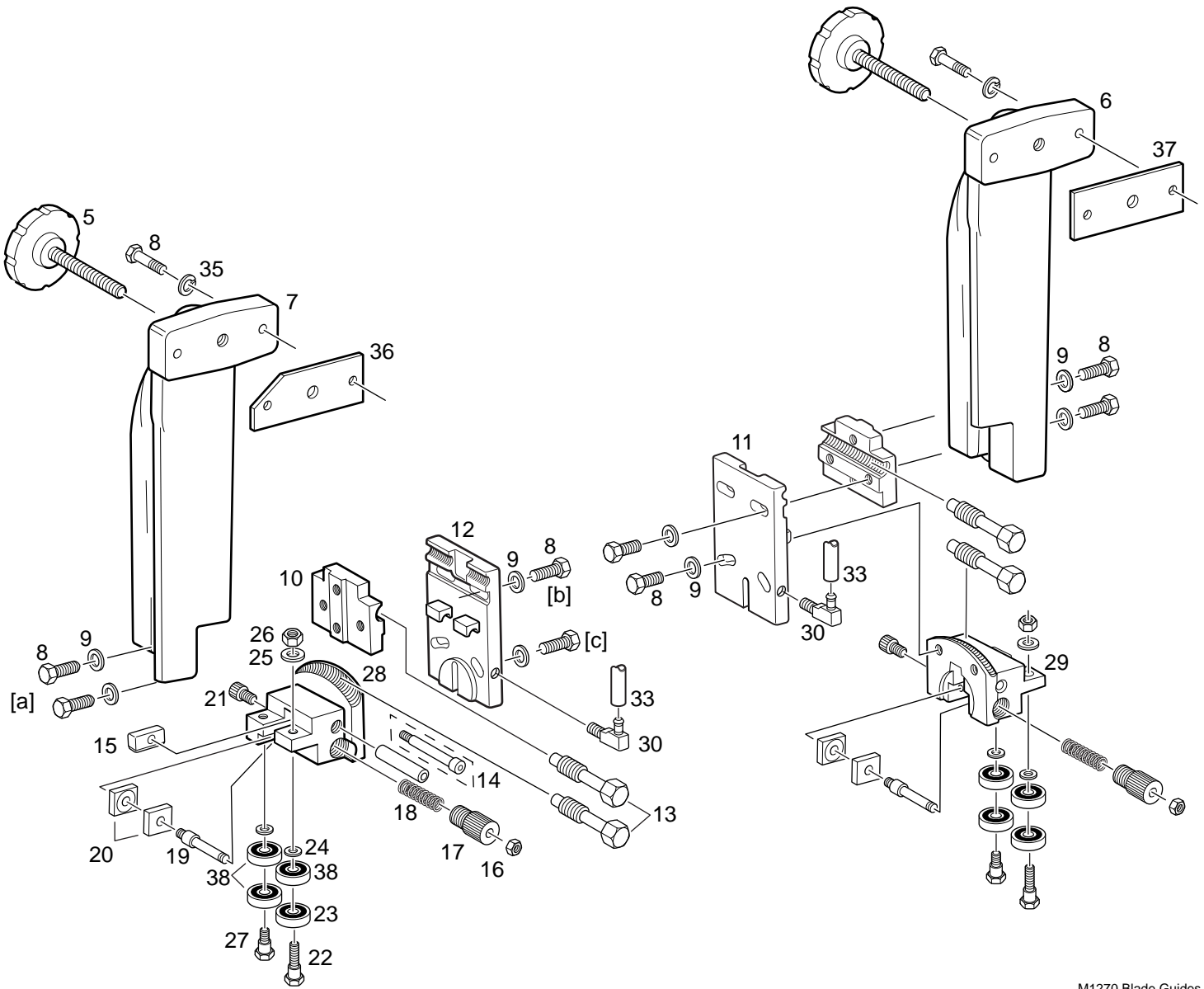


M1316FramWheelDet-3

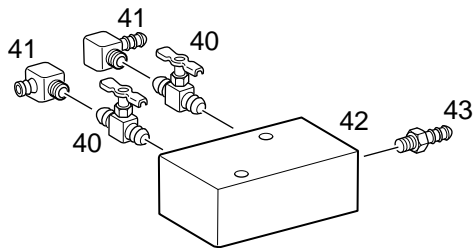
Frame Assembly

1	F-017B-001	Band Wheel Assembly, 1-1/4", I.E. (after sn 2215)
	106629	Band Wheel Assembly, 1" , I.E.
2	F-017A-001	Band Wheel Assembly, 1-1/4", D.E. (after sn 2215)
	106635	Band Wheel Assembly, 1" , D.E.
3	106634-001	Drive Wheel Assembly, 1-1/4" (after sn 2215)
	106634	Drive Wheel Assembly, 1"
4	102037	Internal Ring Gear
5	107097	Wheel Axle (after sn 2234)
	106630-001	Wheel Axle (before sn 2234)
6	100414-002	Bearing (2 required per wheel)
7	106631	Wheel Spacer
8	100068-003	Snap Ring (2 required per wheel)
9	100019-008	Hex Jam Nut, 3/4
10	100004-020	Cap Screw, HH, 5/16-18 x 1-1/4
11	F-018	Guide Beam
12	F-019	Frame
13	F-022	Wheel Plate
14	106386SERV	Wheel Cover Assembly, I.E.
15	106387SERV	Wheel Cover Assembly, D.E.
16	100063	Thumb Screw
17		Rite Tension® Device (see page 30)
18	100017-008	Hex Nut, 3/4-10
19	101679	Trough
20	100000-018	Machine Screw, RH, 10-32 x 3/8
21	100034-006	Set Screw, SH, 5/16-18 x 7/8
22	100004-019	Cap Screw, HH, 5/16-18 x 1-1/8
23	100004-013	Cap Screw, HH, 5/16-18 x 5/8
24	100025-002	Flat Washer, 5/16
25	100004-036	Cap Screw,HH, 1/2-13 x 1-1/4
26	100000-025	Machine Screw, RH, 1/4-20 x 1/2
27	F-230	Wheel Cover Link (older models)
28	F-212	Lower Wheel Cover, I.E. (older models)
29	F-214	Upper Wheel Cover, I.E. (older models)
30	101995	Hinge (older models)
31	100000-024	Machine Screw, RH, 1/4-20 x 3/8
32	100000-026	Machine Screw, RH, 1/4-20 x 5/8
33	F-213	Guard, Lifting Handle (older models)
34	F-210	Upper Wheel Cover, D.E. (older models)
35	F-211	Lower Wheel Cover, D.E. (older models)
36	100025-005	Lock Washer, 1/2
37	100025-003	Lock Washer, 3/8
38	100004-029	Cap Screw, HH, 3/8-16 x 1-1/4

Blade Guides for 1-1/4" Blade Starting Series #2218



M1270 Blade Guides

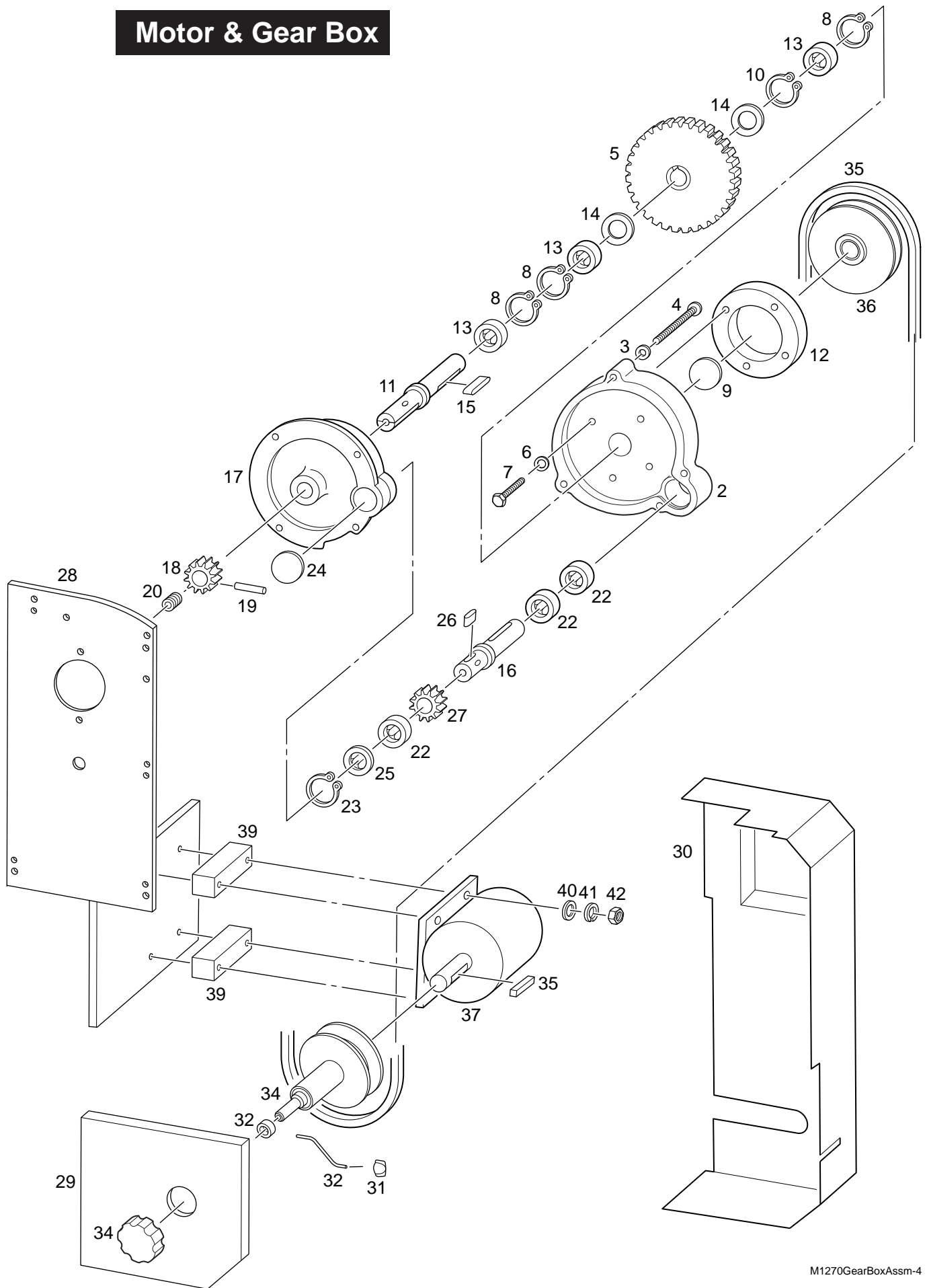


152177-003

Blade Guides for 1-1/4" Blade

1	155128-003	Blade Guide Assembly, D.E. (includes items 5,6,8-10,12-14,16-27,29,30,35,37 & 38)
2	155129-003	Blade Guide Assembly, I.E. (includes items 5,7-28,30,35,36 & 38)
3	155130-002	Guide Support Assembly, D.E. (includes items 13,14,16-27,29 & 38)
4	152161-002	Guide Support Assembly, I.E. (includes items 13-28 & 38)
5	106220-002	Hand Wheel & Screw
6	155126	Roller Guide Bracket, D.E.
7	155127	Roller Guide Bracket, I.E.
8	100004-018	Cap Screw, HH, 5/16-18 x 1
9	100030-004	Flat Washer, 1/4
10	152155	Verticle Adjusting Block
11	152121-003	Horizontal Adjusting Block, I.E.
12	152121-002	Horizontal Adjusting Block, D.E.
13	152151	Adjusting Bolt
14	100053-036	Roll Pin, 1/4 x 2
	100165-013	Shoulder Bolt, 1/4 x 1-1/4 (earlier models)
15	152153	Carbide Back-up Guide
16	100023-006	Hex Nut, 1/4-20
17	152156	Adjusting Knob
18	100136-009	Spring
19	152157	Stud
20	106317	Fixed Carbide Guide (2 req'd per blade guide)
21	100008-079	Cap Screw, SH, 5/16-18 x 1/2
22	150465	Eccentric Roller Axle
23	100416-001	Bearing, Side
24	100097-001	Roller Guide Washer
25	100027-005	Lock Washer, Shakeproof, 5/16
26	101300	Hex Nut, 5/16-18
27	150464	Roller Axle
28	152120	Guide Support, I.E.
29	152119	Guide Support, D.E.
30	100324-009	Hose Barb, 1/4 npt, 90°
31	100219-002	Clamp, 1/4"
32	100350-068	Coolant Hose, D.E., 1/4" x 68"
33	100350-036	Coolant Hose, D.E., 1/4" x 36"
34		Blade Guards (see page 30 in parts manual)
35	100025-002	Lock Washer, 5/16
36	107095-003	Guide Bracket Plate, I.E. (starting serial number 2233)
	101969	Guide Bracket Plate, I.E. (before serial number 2233)
37	107095-004	Guide Bracket Plate, D.E. (starting serial number 2233)
	F-25	Guide Bracket Plate, D.E. (before serial number 2233)
38	100406-001	Bearing
39	152177-003	Coolant Manifold Assembly (includes items 30,40 - 43)
40	100226-004	Needle Valve
41	100324-009	Hose Barb Fitting, 90 deg.
42	155133	Coolant Manifold
43	100324-003	Hose Barb, 3/8

Motor & Gear Box

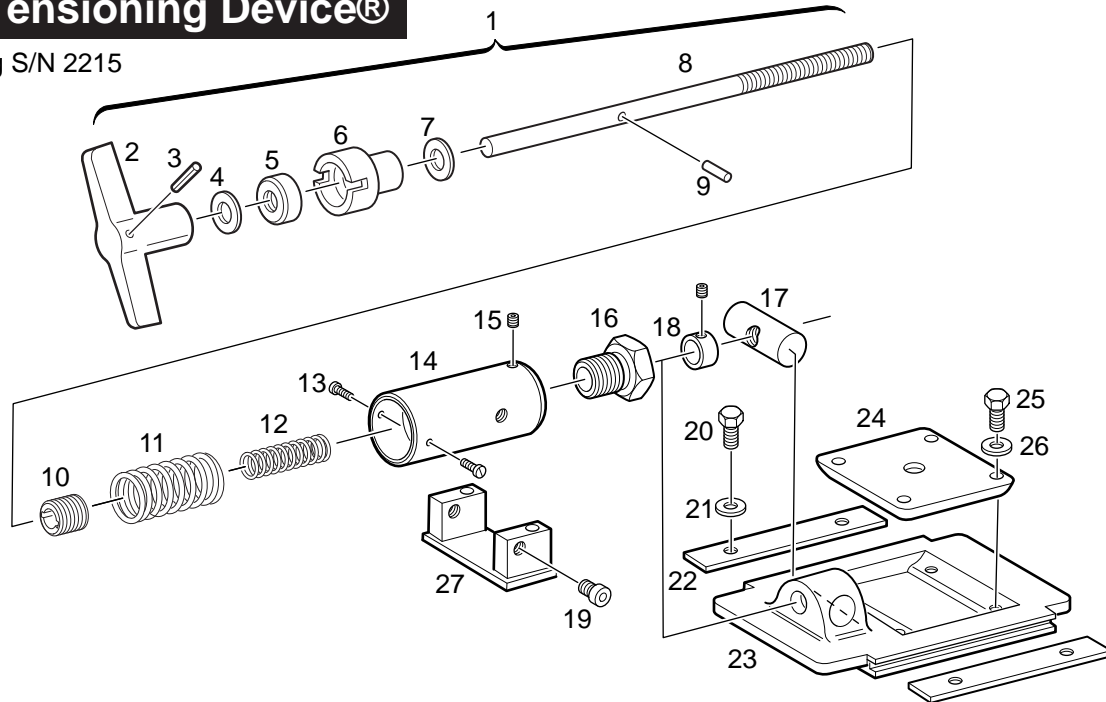


Motor & Gear Box

1	102027	Gear Box (sn 2222-2245)
	102027-010	Gear Box (starting sn 2246)
2	F-027	Gear Case Cover (sn 2222-2245)
	F-027-001	Gear Case Cover
3	100025-001	Lock Washer, 1/4
4	100000-030	Machine Screw, RH, 1/4 x 2-1/2
5	F-096	Driven Gear Assembly (Phenolic)
6	100029-002	Flat Washer, 1/4
7	100004-005	Cap Scew, HH, 14-20 x 5/8
8	100068-005	Snap Ring (only 2 used on sn 2222-2245)
9	100072-004	Expansion Plug (not used on sn 2222-2245)
10	100069-011	Internal Snap Ring (not used sn 2222-2245)
11	107339	Drive Shaft, (sn 2222-2245)
	107339-001	Drive Shaft, 1-1/4" Blade
12	155240	Bearing Housing
13	100414-006D	Bearing (only 2 used on sn 2222-2245)
14	100069-011	Spacer (sn 2222-2245)
	106896-002	Spacer
15	100056-010	Key, Sq, 3/16 x 1
16	101189	Pulley Shaft
17	F-013	Gear Case Housing
18	102030	Drive Pinion
19	100053-007	Roll Pin
20	100211-022	Pipe Plug, 1/8 NPT
21	106896-001	Spacer
22	100414-003D	Bearing
23	100068-002	Snap Ring
24	100072-002	Expansion Plug
25	106905	Spacer
26	100056-001	Key, Sq, 1/8 x 3/4
27	F-097	Pinion
28	107310	Motor Mount Weldment
29	107331	Belt Guard Cover
30	107330	Belt Guard
31	105461	Speed Indicator
32	107337	Indicator Rod
33	150217	Stop Collar
34	105451-003	Variable Speed Pulley, Motor (includes hand wheel 407-712)
35	105454-003	Variable Speed Belt
36	105451-018	Variable Speed Pulley, Driven
37	100835-015	Motor, 5 hp, TEFC, 208-230-460/60/3
38	100056-013	Key, Sq, 3/16 x 1-3/8
39	107311	Motor Riser
40	100029-003	Flat Washer, 5/16
41	100025-002	Lock Washer, 5/16
42	100017-002	Nut, 5/16-18

Rite Tensioning Device®

Starting S/N 2215



Calibrating the WELLSAW RITE-TENSION® Blade Tensioning Device

The Rite-Tension® device is a simple turn counter that is activated by blade tension and can be easily adjusted in the field.

Please review the operation instructions before making any adjustment:

1. LOOSENING

When replacing a worn or broken blade always turn the "T" handle out at least six (6) turns (counter-clockwise).

This will reset the device. **Always push-in** on the handle when loosening, this will insure that the internal counter is engaged.

2. TIGHTENING

Always pull out on the "T" handle when tightening the device (clockwise). After a number of turns the "T" handle will come to a hard stop.

At this point the blade will be properly tensioned. Do not force the unit beyond this point.

Note: If the mechanism does not seem to come to a hard stop but continues to tighten, stop and repeat steps one and two. Check to make sure the blade is properly positioned on the band wheels and is not binding in the guides during the tightening process.

Calibration

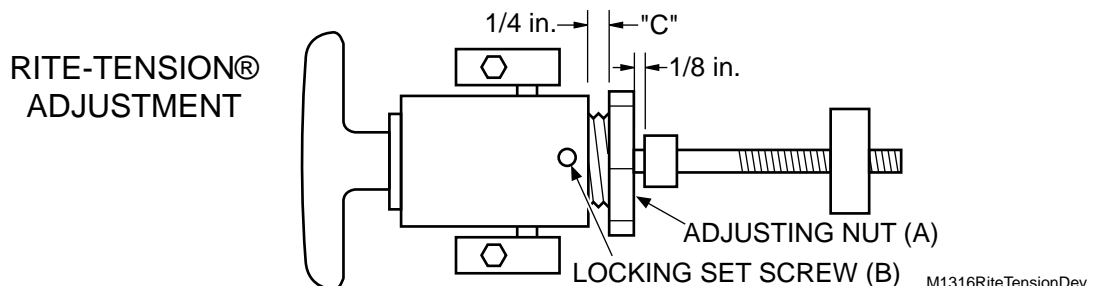
The final tension is determined by the Adjusting Nut, pn 150070 (see "A" in drawing). The "rough" position can be checked by measuring the clearance between the nut and the Tensioning Housing, pn 150067, (see "C").

A clearance of 1/4" will be within a safe range of the correct tension. When a tension gauge becomes available the device should be calibrated as follows: Loosen the set screw (B) one turn.

-If the band tension needs to be *increased* the adjusting nut should be turned out, one flat at a time, then the set screw tightened and the device rechecked.

-If the tension needs to be *decreased* the adjusting nut should be turned in, one flat at a time and rechecked.

The device must be in the "loosened" or "open" position to make this adjustment.



Rite Tensioning Device®

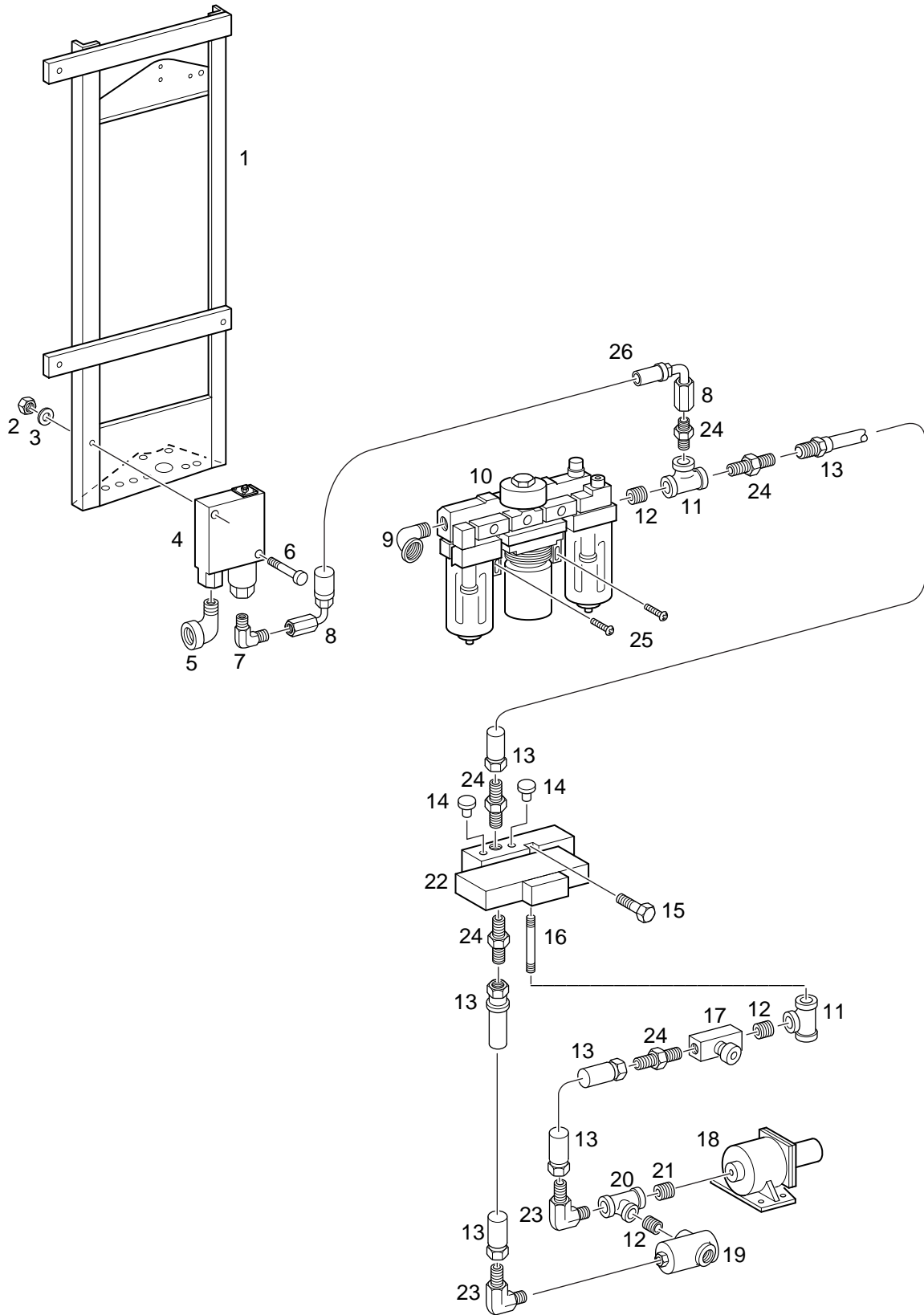
Caution:

The Rite Tension ® blade tensioning device has been factory calibrated for your saw.

When re-tightening or replacing a blade, the 'T' handle must be turned counter-clockwise at least six turns to reset the Rite Tension ® mechanism.

1	150463	Blade Tensioning Ass'y (includes items 2 thru 18)
2	101184	Take Up Screw Handle
3	100053-005	Roll Pin, 3/16 x 1
4	100030-007	Flat Washer, 1/2
5	100410-001	Thrust Bearing
6	150068	Bearing Housing
7	100116-007	Belleville Washer (2 req'd)
8	107322	Take Up Screw (includes items 2, 3 & 9)
9	100052-026	Dowel Pin, 3/16 x 11/16
10	150069	Turn Counter
11	100136-006	Spring, Large Diameter
12	100136-001	Spring, Small Diameter
13	100000-010	Machine Screw, 8-32 x 5/16 (2 req'd)
14	150067	Blade Tension Housing
15	100034-008	Set Screw, 1/4-20 x 1/4
16	150070	Tension Adjuster
17	155068	Swivel Nut
18	098030-004	Collar, w/set screw
19	100008-072	Cap Screw, SH 5/16-18 x 3/8 (2 req'd)
20	100004-013	Cap Screw, HH 5/16-18 x 5/8 (4 req'd)
21	100025-002	Lock Washer, 5/16 (4 req'd)
22	B-046	Slide Block Guide, (2 req'd)
23	101164	Slide Block
24	F-010	Wheel Adjusting Block
25	100004-018	Cap Screw, HH 5/16-18 x 1 (4 req'd)
26	100029-003	Flat Washer, 5/16 (4 req'd)
27	107301	Tensioner Support

1270A Pneumatic Assembly



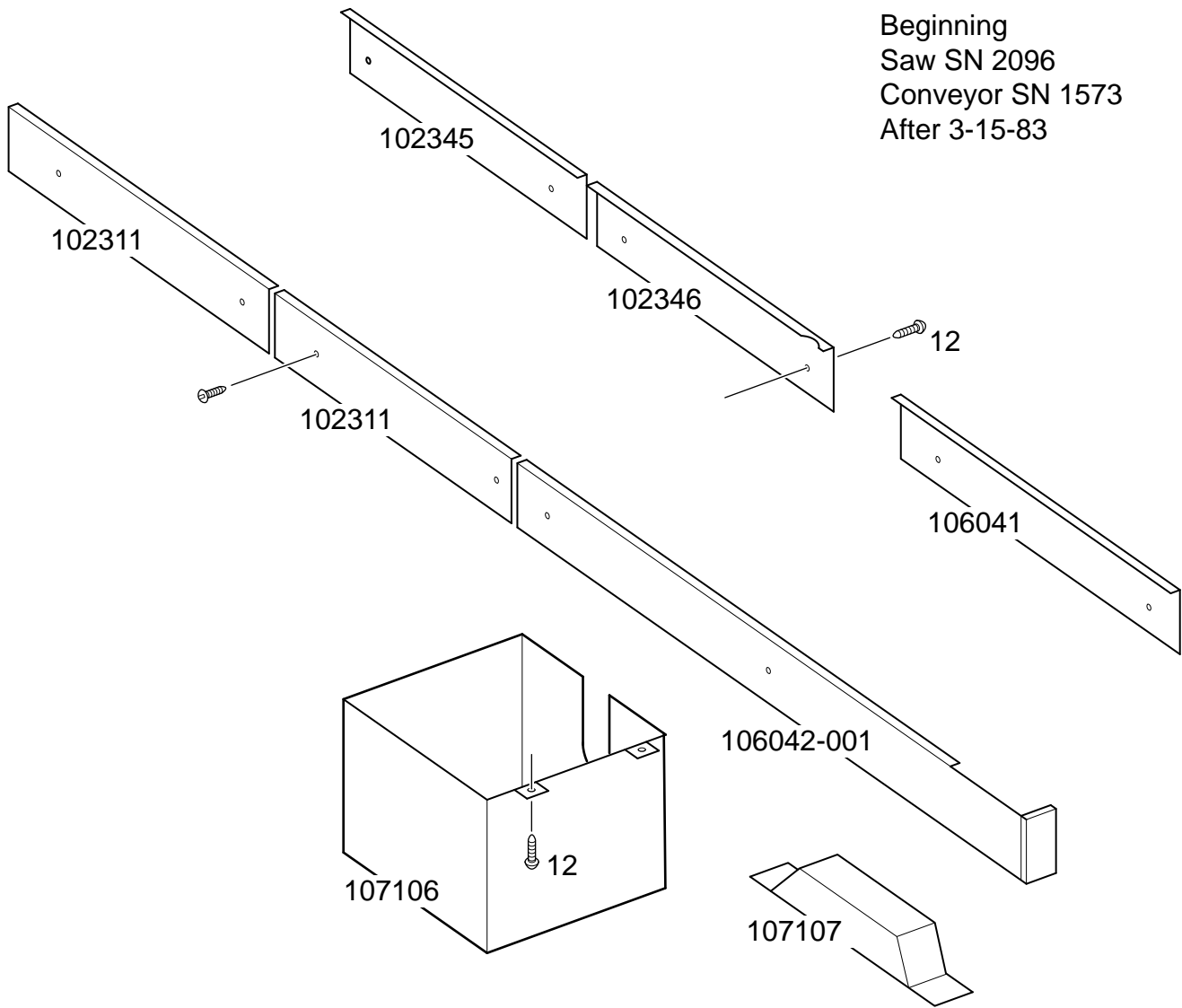
1270A Pneumatic Assembly

1	107039	Control Support Weldment
2	100015-015	Hex Nut, 1/4-20
3	100025-001	Lock Washer, 1/4
4	100798-001	Pressure Switch
5	100796-002	Elbow, Short, 90 , Bushed
6	100008-053	Cap Screw, SH, 1/4-20 x 1-1/4
7	100256-001	Adapter, Straight
8	100257-005	Adapter, Swivel, 90
9	100206-002	Elbow, Street, 90
10	100259-016	Filter, Regulator, Lubricator
11	100207-002	Tee, 1/8 NPT
12	100203-018	Nipple, Close, 1/4 NPT, Black
13	100257-001	Swivel Connector
14	100317-012	Breather Vent
15	1000008-068	Cap Screw, SH, 10-32 x 1-1/4
16	100203-020	Nipple, 1/4 x 2 NPT, Black
17	100286-009	Control Valve
18	100299-014	Air Cylinder
19	100304-002	Pilot Valve
20	100229-002	Tee, Reducing, 1/8 x 1/8 x 1/4 NPT
21	100203-001	Nipple, Close, 1/8 NPT, Black
22	100673-012	Solenoid Valve, NVFS-2200-3FZ-02T
23	100256-003	Angle Adapter
24	100255-001	Nipple, Hex, 1/4
25	100013-002	Cap Screw, BH, 1/4-10 x 3/4
26	100254-056	Hose, Air, 1/4, 12"

Gaurd Details

Always Give Serial Model Number and Part Number When Ordering Repair Parts

GUARD DETAILS



M1270 Guard Details

The Original.....Since 1926

Wellsaw[®]
M A D E I N U . S . A .

2829 N. Burdick St.
Kalamazoo, MI 49004
Phone: (269) 345-1132
Fax: (269) 345-0095
E-mail: parts@wellsaw.com