

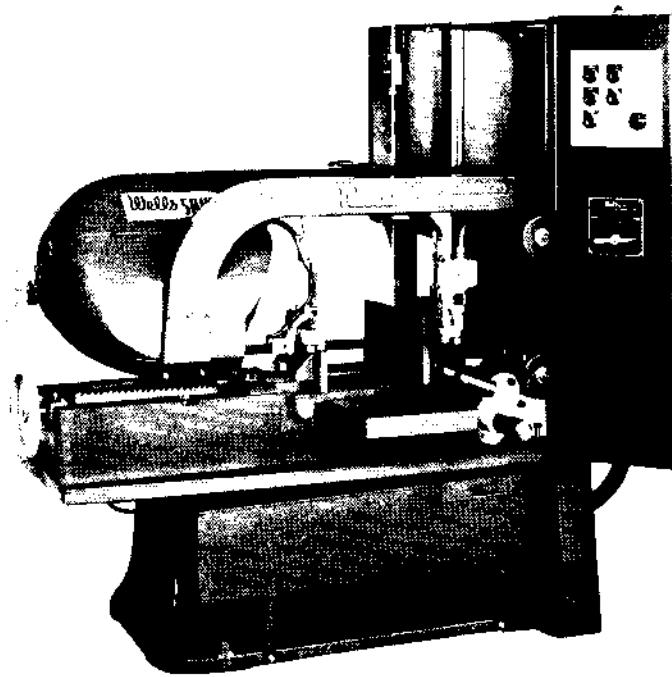
STARTING SERIAL NUMBER 1321

PARTS LIST

FOR

Wellsaw®

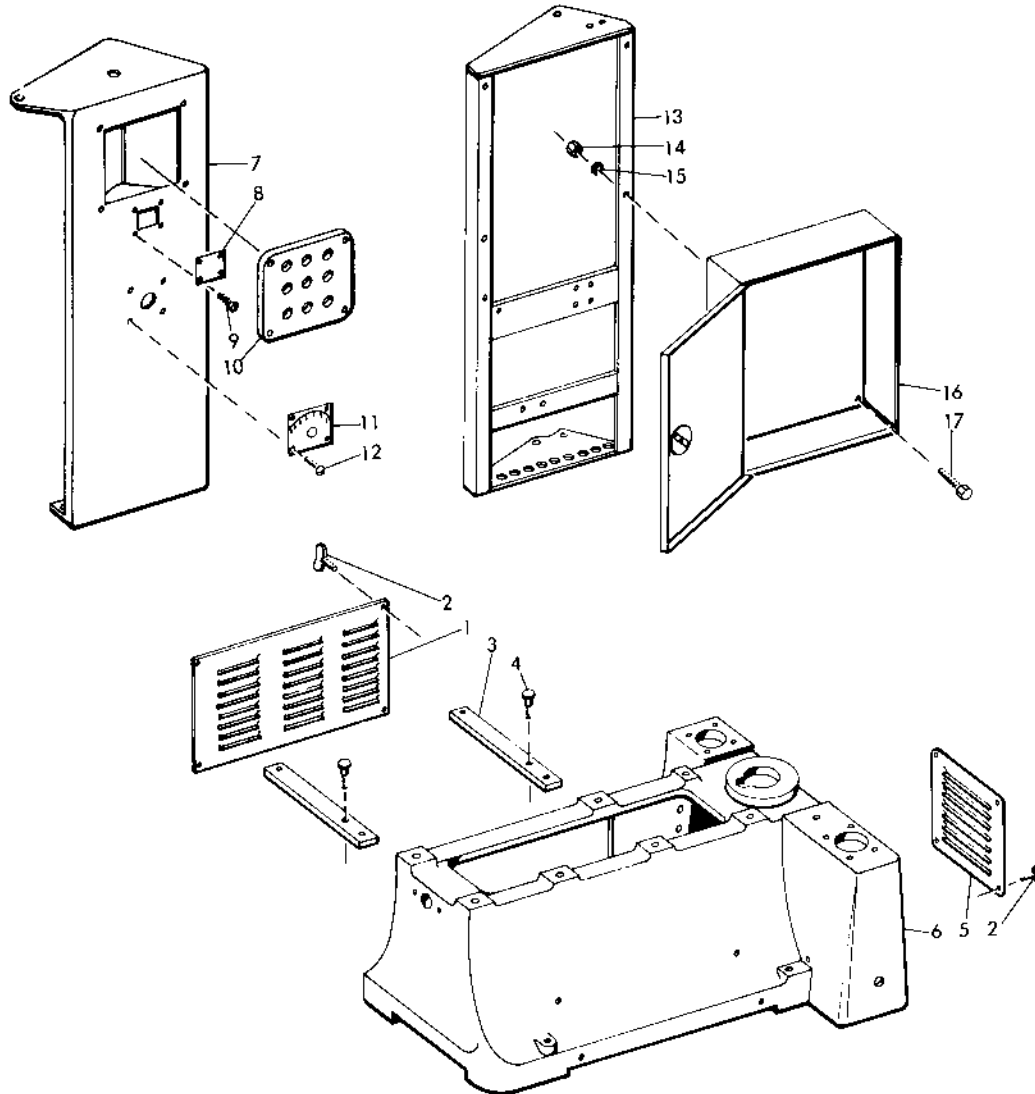
MODEL 1270 METAL CUTTING BAND SAW



Wellsaw®

2829 N. Burdick, Kalamazoo, MI 49004
Telephone: 616-345-1132
FAX: 616-345-0095

ALWAYS GIVE MODEL NUMBER AND SERIAL NUMBER WHEN ORDERING REPAIR PARTS
BASE AND CONTROL SUPPORT DETAILS

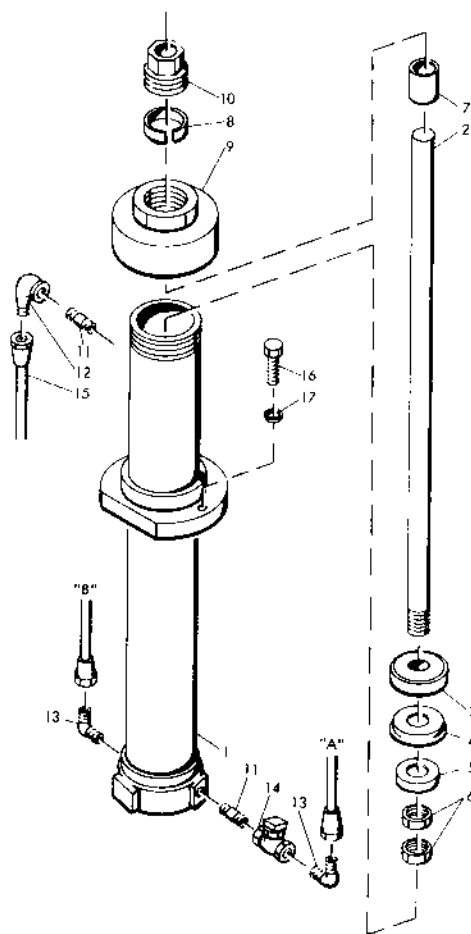


PARTS LIST

REF. NO.	PART NUMBER	DESCRIPTION
1	F-71	Side Access Door
2	100063	Thumb Screw - 1/4 - 20 x 1/2
3	105044	Tank Support
4	101984	Stud
5	F-16	Access Door (End)
6	106109	Base
7	106104	Front Control Support
8	106112	Counter Hole Cover
9	100001-27	Machine Screw - #5 - 40 x 3/8 Flat Head
10	100695-11	Push Button Cover
11	106134	Name Plate
12	100000-18	Machine Screw - #10 - 32 x 3/8 Round Head
13	106119	Control Support
14	100017-1	Hex Nut - 1/4 - 20
15	100025-1	Lock Washer - 1/4
16	106108	Control Box
	106237	Control Panel (Not Shown)
17	100004-7	Cap Screw - 1/4 - 20 x 3/4 Hex Head

ALWAYS GIVE MODEL NUMBER AND SERIAL NUMBER WHEN ORDERING REPAIR PARTS

HYDRAULIC CYLINDER DETAILS

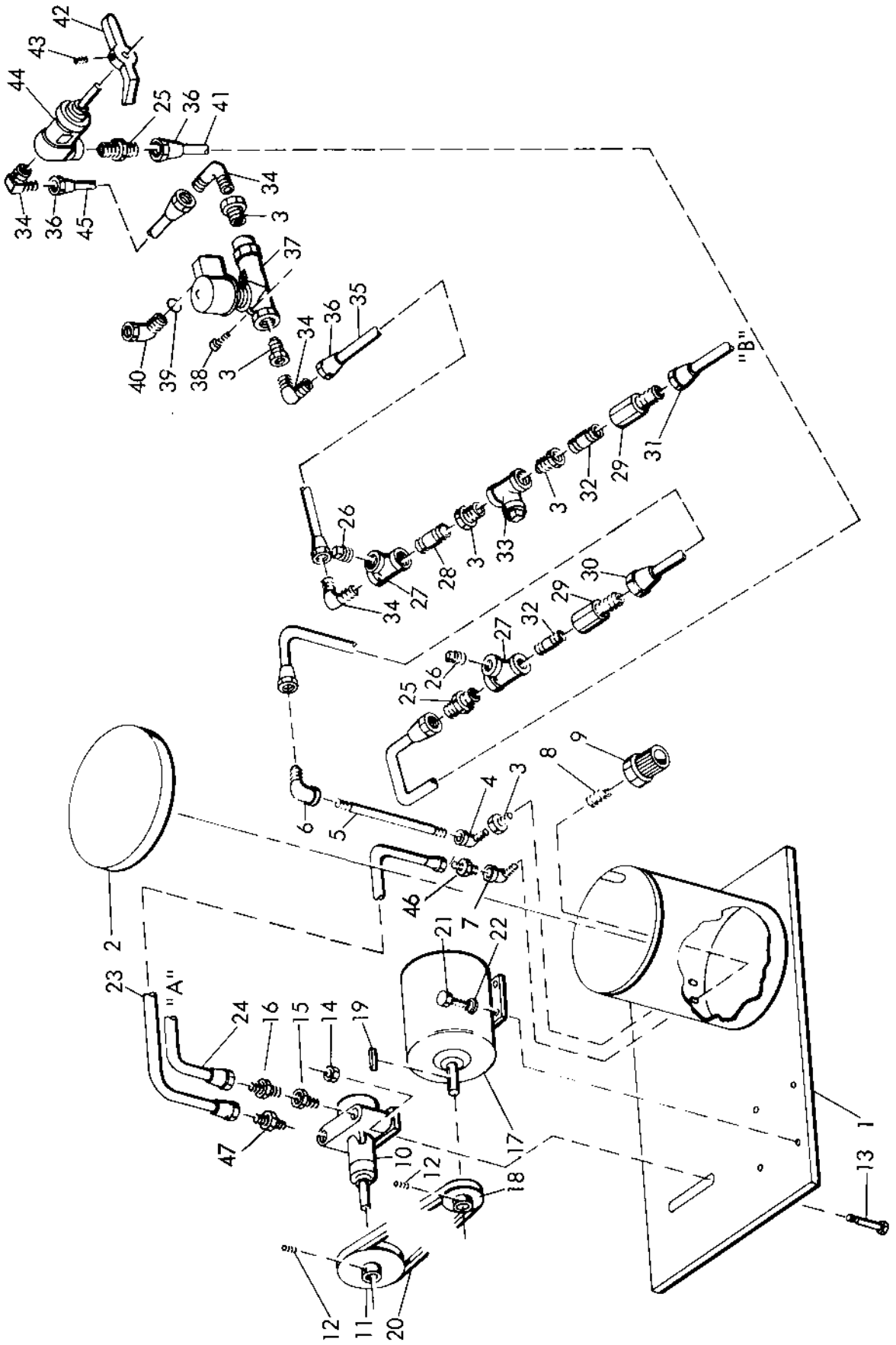


PARTS LIST

REF. NO.	PART NUMBER	DESCRIPTION
1	F-306	Hydraulic Cylinder
2	F-189	Piston Rod
3	F-131	Piston
4	F-146	Rubber Cup
5	F-132	Piston Follower
6	100019-16	Hex Jam Nut - 5/8 - 18
7	F-231	Sleeve
8	100201-5	Packing
9	F-209	Cylinder Cap
10	F-130	Gland Bushing
11	100203-18	Close Nipple - 1/4 x 1
12	100215-2	Tube Elbow - 3/8 x 1/4
13	100214-4	Tube Elbow - 3/8 x 1/4
14	100241	Check Valve
15	101937	Tube and Nut Assy.
16	100004-27	Cap Screw - 3/8 - 16 x 1 Hex Head
17	100025-3	Lock Washer - 3/8
	101903	Hydraulic Cylinder Assy. Complete Includes Items 1 Thru 15
	101904	Piston Rod Assy. Includes Items 2 Thru 6

ALWAYS GIVE MODEL NUMBER AND SERIAL NUMBER WHEN ORDERING REPAIR PARTS

HYDRAULIC CONTROL DETAILS



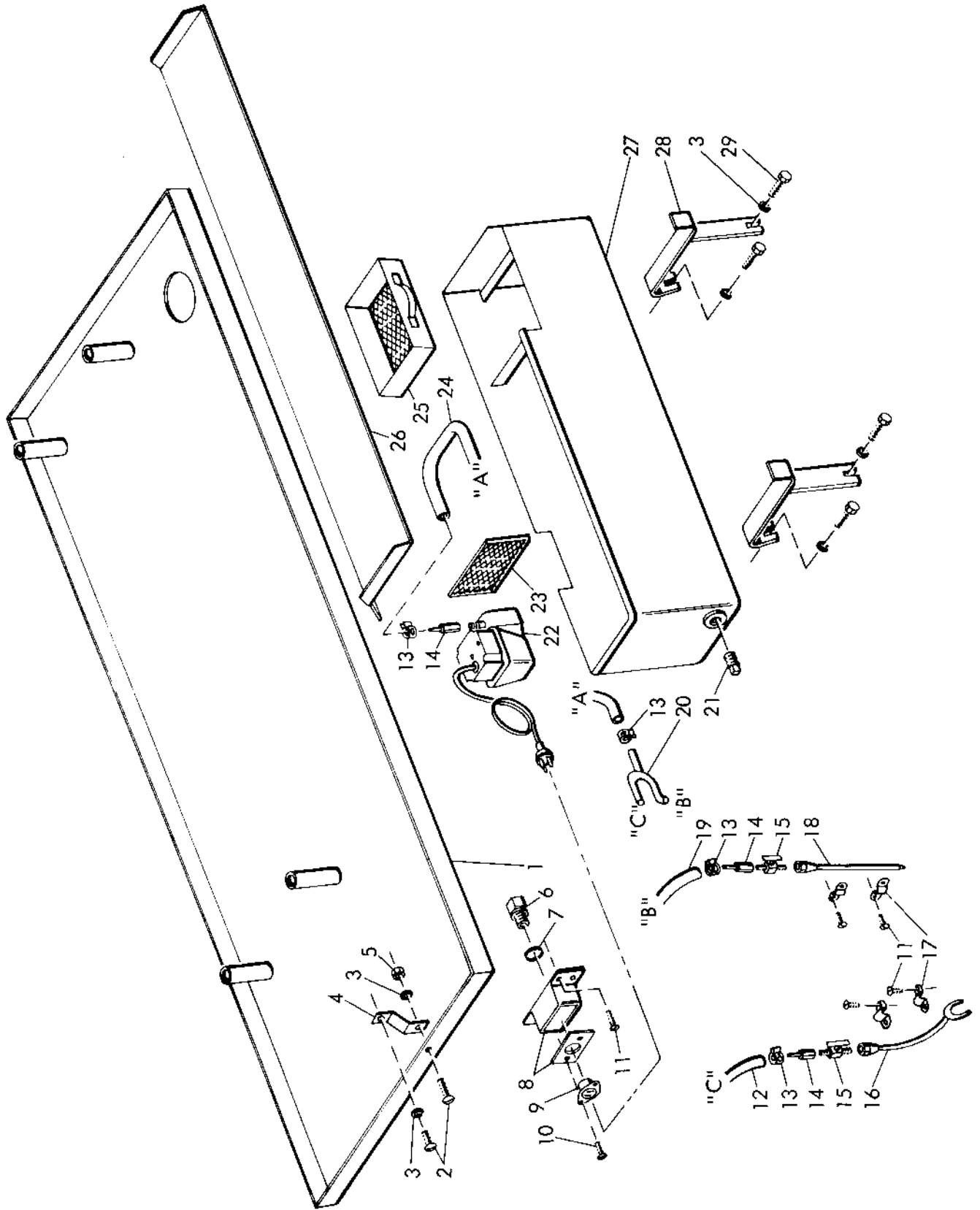
Always give model number, serial number and part number when ordering repair parts.

HYDRAULIC CONTROL DETAILS

PARTS LIST

REF NO.	PART NUMBER	DESCRIPTION
1	101939	Hydraulic Tank
2	101940	Hydraulic Tank Cover
3	100208-3	Reducing Bushing - 3/8 to 1/4
4	100206-2	Street Elbow - 1/4
5	100203-27	Nipple - 1/4 x 5-1/2
6	100215-2	Tube Elbow - 3/8 x 1/4
7	100206-3	Street Elbow - 3/8
8	100203-35	Close Nipple - 3/8 x 1
9	100290-2	Filter
10	100242	Pump
11	F-147-1	Pulley (Driven)
12	100034-3	Set Screw - 5/16 - 18 x 3/8
13	100014-21	Carriage Bolt - 5/16 - 18 x 1
14	100017-2	Hex Nut - 5/16 - 18
15	100208-5	Reducing Bushing - 1/2 to 1/4
16	100216-6	Tube Union - 3/8 x 1/4
17		1/2 H.P. Motor - Give Complete Electrical Specs.
18	C-19-5	Motor Pulley
19	100056-20	Square Key - 3/16 x 3/16 x 1-5/8
20	100066-4	"V" Belt
21	100004-16	Cap Screw - 5/16 - 18 x 7/8
22	100029-3	Flat Washer - 5/16
23	106222	Tube and Nut Assembly
24	101956	Tube and Nut Assembly
25	100255-1	Straight Adaptor
26	100211-2	Pipe Plug - 1/4
27	100207-2	Pipe Tee - 1/4
28	100203-18	Close Nipple - 1/4 x 1
29	101955	Bulkhead Union
30	101958	Tube and Nut Assembly
31	101957	Tube and Nut Assembly
32	100203-19	Nipple - 1/4 x 1-1/2
33	100237-2	Strainer
34	100256-1	Angle Adaptor
35	100254-37	Hose - 1/4 x 50"
36	100257-1	Swivel Connector
37	100523-1	Magnetic Valve - Give Complete Electrical Specs.
38	100008-48	Cap Screw - #10 - 32 x 1-3/4 Socket Head
39	100606-1	Connector Gasket
40	100604-1	Connector
41	100254-27	Hose - 1/4 x 59"
42	F-260	Indicator Head
43	100034-23	Set Screw - 1/4 - 20 x 5/16
44	100238-1	Control Valve
45	100254-36	Hose - 1/4 x 6-1/2"
46	100216-12	Tube Union
47	100216-13	Tube Union

ALWAYS GIVE MODEL NUMBER AND SERIAL NUMBER WHEN ORDERING REPAIR PARTS
COOLANT DETAILS



Always give model number, serial number and part number when ordering repair parts.

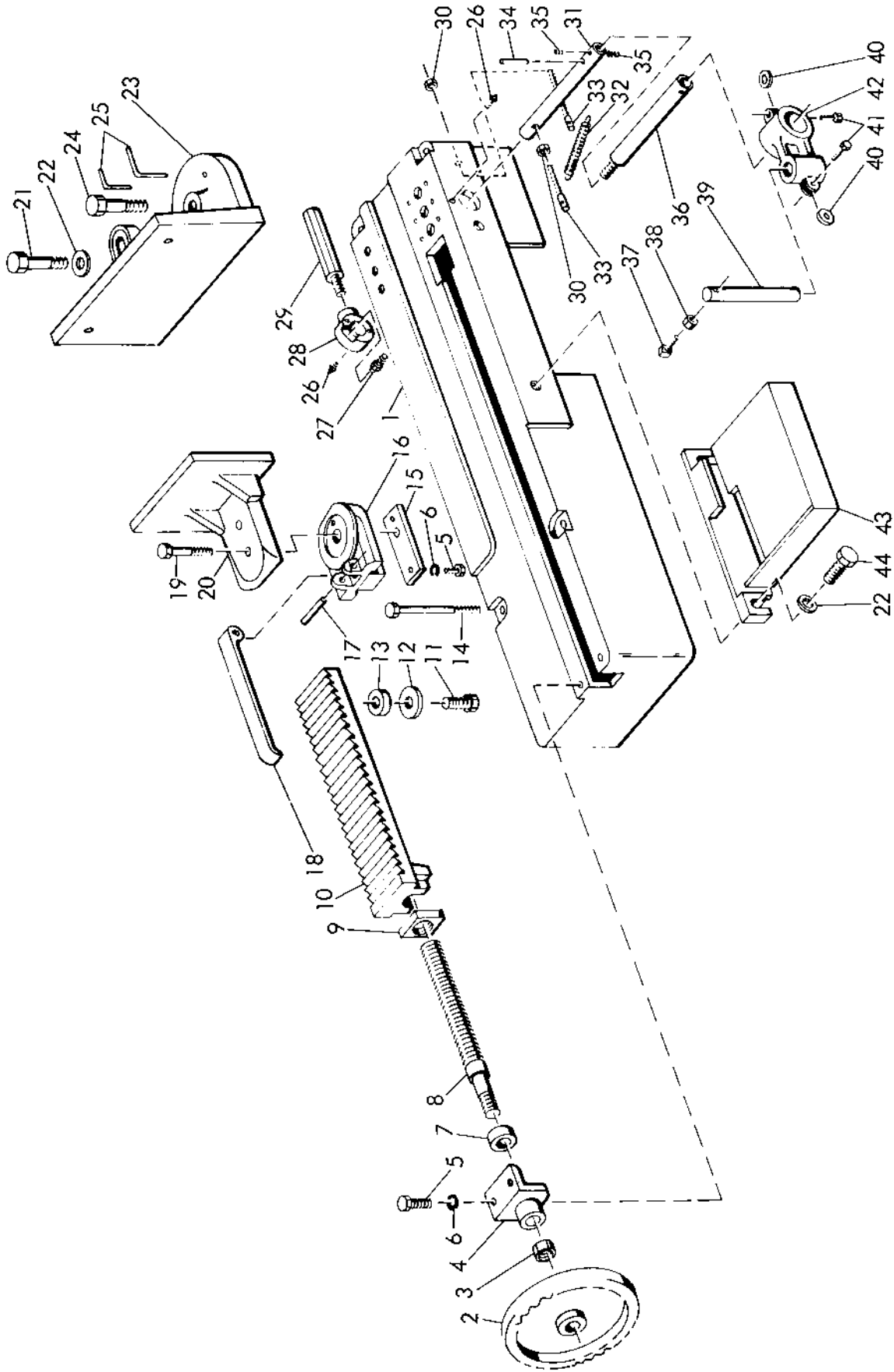
COOLANT DETAILS

PARTS LIST

REF NO.	PART NUMBER	DESCRIPTION
1	F-222	Drip Pan
2	100000-25	Machine Screw - 1/4 - 20 x 1/2 - Round Head
3	100025-1	Lock Washer - 1/4
4	F-238	Drip Pan Support
5	100017-1	Hex Nut - 1/4 - 20
6	100605-1	Connector
7	100606-1	Connector Gasket
8	106110	Receptacle Box and Cover
9	100631-1	Receptacle
10	100048-3	Sheet Metal Screw - #10 x 3/8
11	100000-18	Machine Screw - #10 - 32 x 3/8 - Round Head
12	100220-11	Coolant Hose - 3/8 I.D. x 43" Long
13	100219-1	Hose Clamp
14	102617	Adaptor
15	100226	Needle Valve
16	102007	Flushing Nozzle
17	100246-1	Pipe Strap
18	102024	Coolant Nozzle
19	100220-1	Coolant Hose - 3/8 I.D. x 22" Long
20	F-243	Coolant "Y"
21	100211-3	Pipe Plug
22	100249-1	Coolant Pump
23	101565-1	Screen
24	100220-20	Coolant Hose - 3/8 I.D. x 96" Long
25	101675	Chip Drawer
26	F-228	Splash Guard
27	101674	Coolant Tank
28	F-226	Coolant Tank Support
29	100004-7	Cap Screw - 1/4 - 20 x 3/4 - Hex Head

ALWAYS GIVE MODEL NUMBER AND SERIAL NUMBER WHEN ORDERING REPAIR PARTS

BED AND VISE DETAILS



Always give model number, serial number and part number when ordering repair parts.

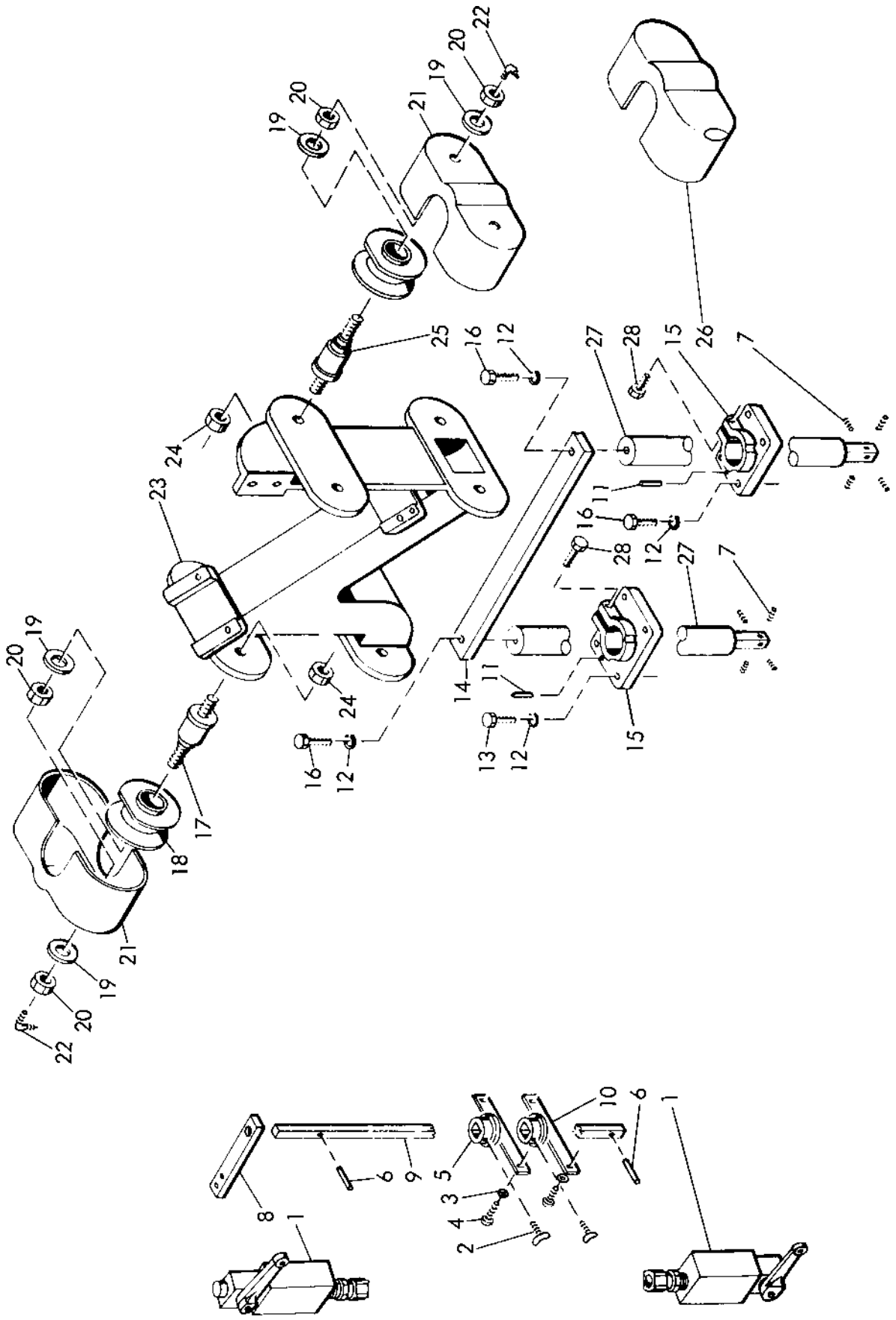
BED AND VISE DETAILS

PARTS LIST

REF NO.	PART NUMBER	DESCRIPTION
1	106101	Bed
2	B-93	Hand Wheel
3	100019-8	Hex Jam Nut - 3/4 - 10
4	M-76	Vise Screw Bracket
5	100004-15	Cap Screw - 5/16 - 18 x 3/4 - Hex Head
6	100025-2	Lock Washer - 5/16
7	100402	Thrust Collar
8	M-60	Vise Screw
9	M-61	Vise Screw Nut
10	F-5	Vise Ratchet
11	100004-20	Cap Screw - 5/16 - 18 x 1-1/4 - Hex Head
12	F-178	Washer
13	F-179	Spacer
14	100010-2	Machine Bolt - 1/2 - 13 x 8
15	F-177	Vise Slide Block Guide
16	F-6	Vise Slide Block
17	100053-2	Roll Pin - 3/8 x 2-1/2
18	F-31	Vise Ratchet Dog
19	100004-49	Cap Screw - 3/4 - 10 x 4 - Hex Head
20	F-3	Movable Vise Jaw
21	100004-42	Cap Screw - 5/8 - 11 x 2 - Hex Head
22	100029-8	Flat Washer - 5/8
23	F-1	Stationary Vise Jaw
24	100004-48	Cap Screw - 3/4 - 10 x 3 - Hex Head
25	M-65	Locating Pin
26	100243-1	Grease Fitting
27	101960	Stud
28	106103	Stock Stop Cam
29	101962	Lever
30	100017-3	Hex Nut - 3/8 - 16
31	106102	Stock Stop Bar
32	101234	Spring
33	101233	Adjusting Screw
34	100053-1	Roll Pin - 7/32 x 2-1/2
35	100034-3	Set Screw - 5/16 - 18 x 3/8
36	106105-1	Stock Stop Extension Bar
37	100033-16	Set Screw - 5/8 - 11 x 4
38	100019-7	Hex Jam Nut - 5/8 - 11
39	106107	Stop Arm
40	100030-7	Flat Washer - 1/2 S.A.E.
41	100008-32	Cap Screw - 1/2 - 13 x 1-1/2 - Socket Head
42	106106	Stop Arm Bracket
43	F-11	Tip-Off Block
44	100004-41	Cap Screw - 5/8 - 11 x 1-1/2 - Hex Head

ALWAYS GIVE MODEL NUMBER AND SERIAL NUMBER WHEN ORDERING REPAIR PARTS

FRAME YOKE AND ROLLER DETAILS



Always give model number, serial number and part number when ordering repair parts.

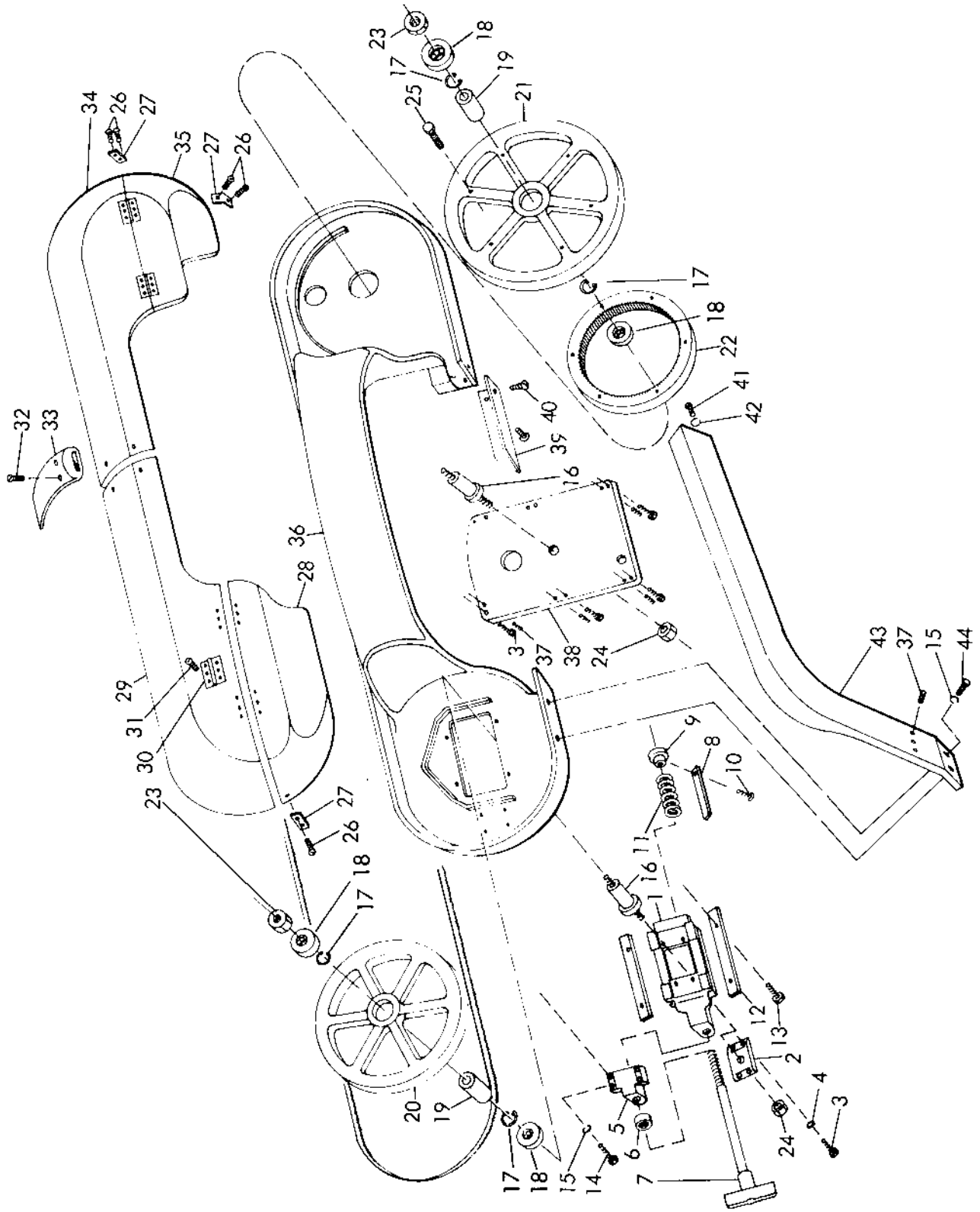
FRAME YOKE AND ROLLER DETAILS

PARTS LIST

REF NO.	PART NUMBER	DESCRIPTION
1	100782-3	Limit Switch - Upper and Lower
2	100063	Thumb Screw - 1/4 - 20 x 1/2
3	100027-3	Lock Washer
4	100000-19	Machine Screw - #10 - 32 x 1/2 - Round Head
5	106129	Actuating Collar
6	100053-12	Roll Pin - 1/8 x 1
7	100034-22	Set Screw - 5/8 - 11 x 1-1/4
8	106130	Actuating Bar Guide
9	106128	Actuating Bar
10	106131	Actuating Bar Bracket
11	100051-3	Taper Pin - #5 x 1-1/2
12	100025-5	Lock Washer - 1/2
13	100004-38	Cap Screw - 1/2 - 13 x 2 - Hex Head
14	106132	Post Tie Bar
15	F-70	Post Bracket
16	100004-37	Cap Screw - 1/2 - 13 x 1-1/2 - Hex Head
17	101981	Roller Axle - Floating
18	101979	Roller
19	100029-8	Flat Washer - 5/8
20	100019-16	Hex Jam Nut - 5/8 - 18
21	F-98	Roller Case
22	100244-1	Grease Fitting
23	F-125	Frame Yoke
24	100065-7	Hex Nut - 5/8 - 18
25	101982	Roller Axle - Non Floating
26	101935	Roller Case
27	106133	Vertical Post
28	100004-41	Cap Screw - 5/8 - 11 x 1-1/2 - Hex Head

ALWAYS GIVE MODEL NUMBER AND SERIAL NUMBER WHEN ORDERING REPAIR PARTS

FRAME AND WHEEL DETAILS



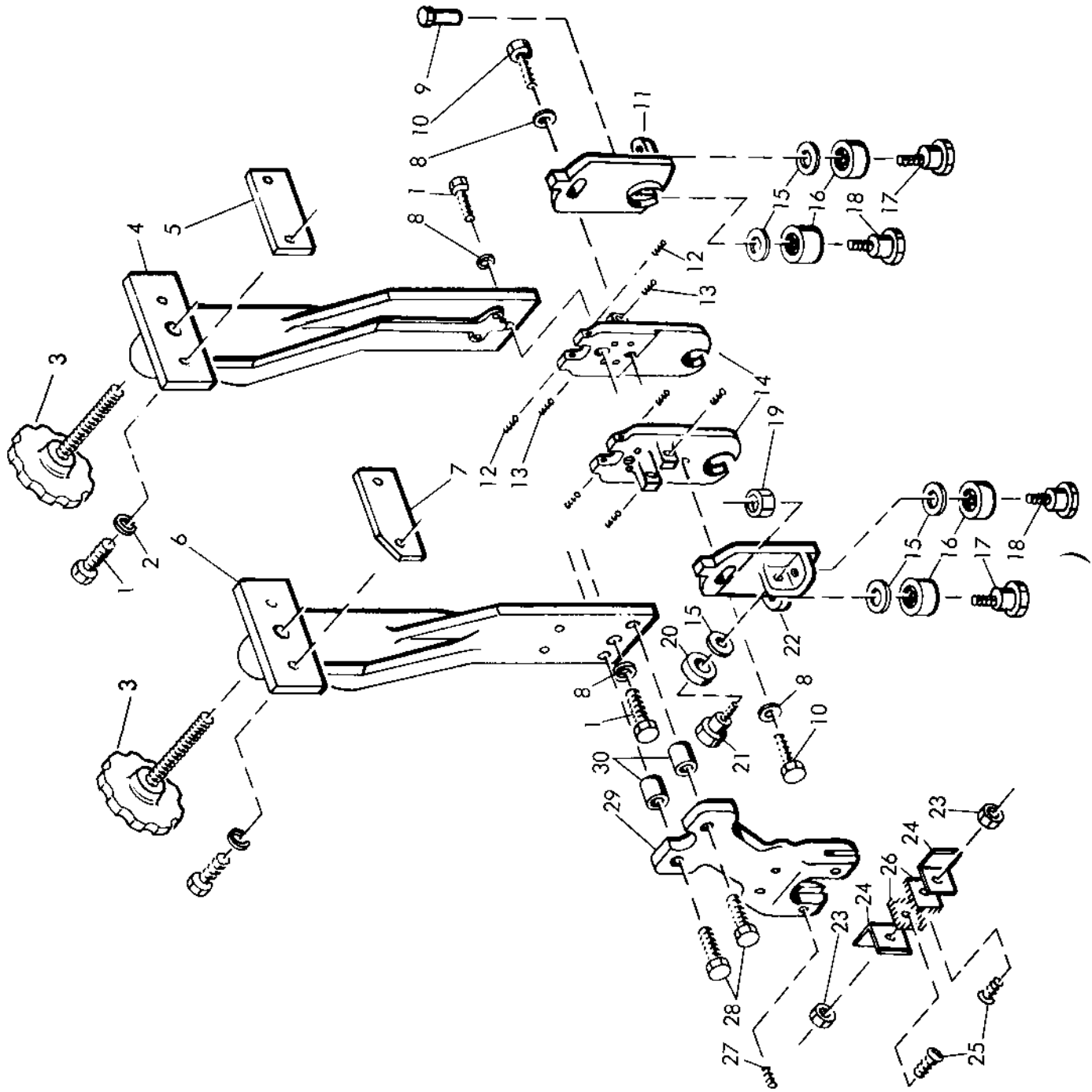
Always give model number, serial number and part number when ordering repair parts.

FRAME AND WHEEL DETAILS

PARTS LIST

REF NO.	PART NUMBER	DESCRIPTION
1	101164	Slide Block
2	F-10	Wheel Adjusting Block
3	100004-19	Cap Screw - 5/16 - 18 x 1-1/8 - Hex Head
4	102360	Spacer
5	105105	Take-Up Support
6	100410-1	Thrust Bearing
7	101185	Take-Up Screw
8	101407	Tension Gauge Block
9	101197	Spring Tension Nut
10	100001-11	Machine Screw - #10 - 32 x 1/2 - Flat Head
11	101198	Tension Spring
12	B-46	Wheel Slide Block Guide
13	100004-15	Cap Screw - 5/16 - 18 x 3/4 - Hex Head
14	100004-27	Cap Screw - 3/8 - 16 x 1 - Hex Head
15	100025-3	Lock Washer - 3/8
16	F-35	Wheel Axle
17	100068-3	Snap Ring
18	100434-1	Ball Bearing
19	104589	Spacer
20	F-17B	Band Wheel - Idler
21	F-17A	Band Wheel - Drive
22	102037	Ring Gear
23	100019-8	Hex Jam Nut - 3/4 - 10
24	100017-8	Hex Nut - 3/4 - 10
25	100004-20	Cap Screw - 5/16 - 18 x 1-1/4 - Hex Head
26	100000-25	Machine Screw - 1/4 - 20 x 1/2 - Round Head
27	F-230	Wheel Cover Link
28	F-212	Lower Wheel Cover - Idle End
29	F-214	Upper Wheel Cover - Idle End
30	101995	Hinge
31	100000-24	Machine Screw - 1/4 - 20 x 3/8 - Round Head
32	100000-26	Machine Screw - 1/4 - 20 x 5/8 - Round Head
33	F-213	Guard-Lifting Handle
34	F-210	Upper Wheel Cover - Motor End
35	F-211	Lower Wheel Cover - Motor End
36	F-19	Saw Frame
37	100034-6	Set Screw - 5/16 - 18 x 7/8
38	F-22	Wheel Plate
39	101679	Drain Trough
40	100000-18	Machine Screw - #10 - 32 x 3/8 - Round Head
41	100004-36	Cap Screw - 1/2 - 13 x 1-1/4 - Hex Head
42	100025-5	Lock Washer - 1/2
43	F-18	Guide Bracket Beam
44	100004-29	Cap Screw - 3/8 - 16 x 1-1/4 - Hex Head
	104590	Wheel Ass'y Comp. - Idler - Incl. Items 16 thru 20 and 23
	106214	Wheel Ass'y Comp. - Drive - Incl. Items 16 thru 19, 21 and 23
	104593	Wheel and Ring Gear Ass'y - Drive - Incl. 106214 Wheel Ass'y and Items 22 and 25

ALWAYS GIVE MODEL NUMBER AND SERIAL NUMBER WHEN ORDERING REPAIR PARTS
ROLLER GUIDE DETAILS



Always give model number, serial number and part number when ordering repair parts.

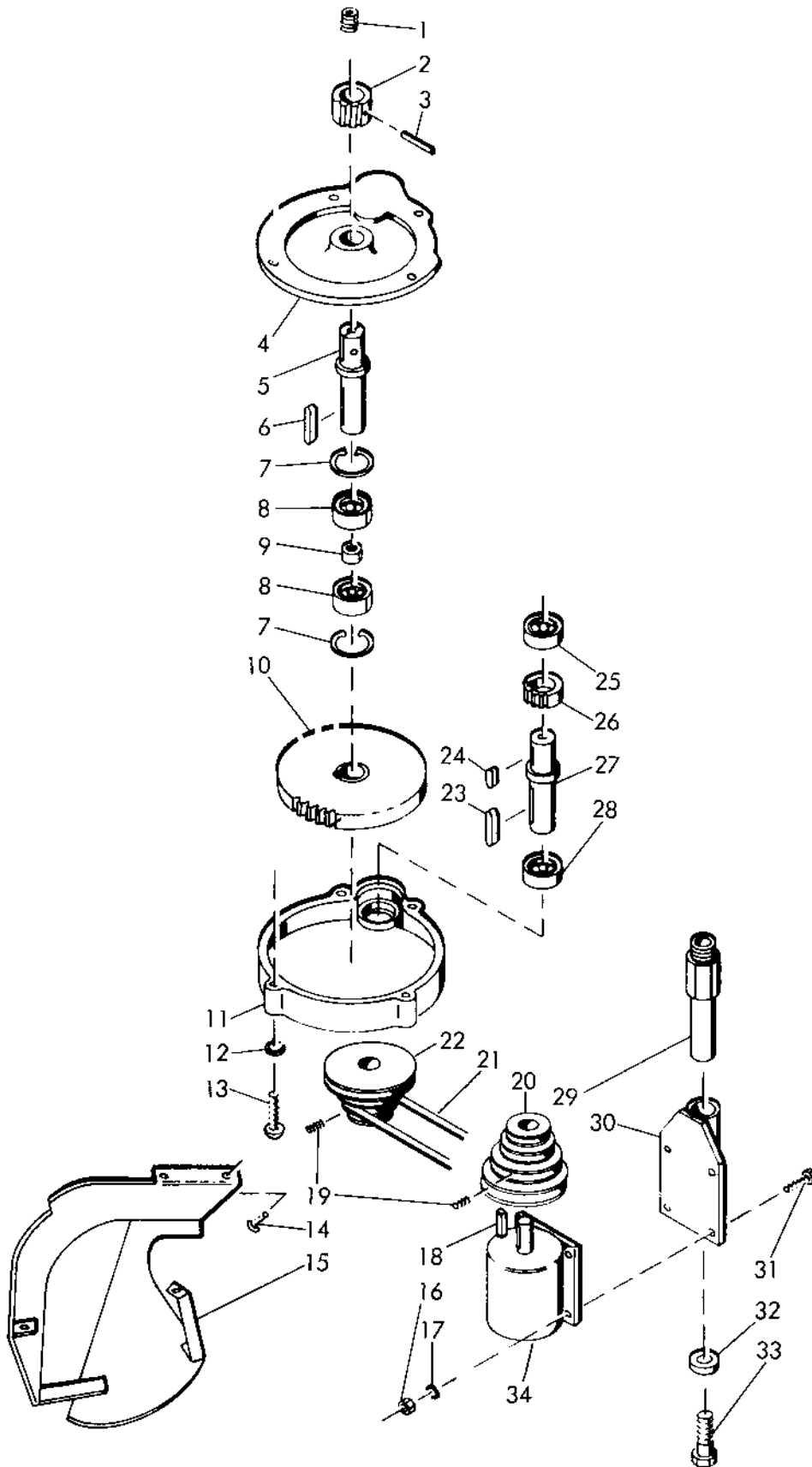
ROLLER GUIDE DETAILS

PARTS LIST

REF NO.	PART NUMBER	DESCRIPTION
1	100004-18	Cap Screw - 5/16 - 18 x 1 - Hex Head
2	100025-2	Lock Washer - 5/16
3	106220-2	Hand Wheel & Screw
4	101380	Roller Guide Bracket - Drive End
5	F-25	Guide Bracket Plate
6	F-240L	Roller Guide Bracket - Idle End
7	101969	Guide Bracket Plate
8	100029-2	Flat Washer - 1/4
9	F-188	Adjusting Nut
10	M-156	Cap Screw - 5/16 - 18 x 7/8 - Thin Head
11	101375	Roller Support - Drive End
12	100077-2	Set Screw - 5/16 - 18 x 1
13	100077-1	Set Screw - 5/16 - 16 x 3/4
14	M-92	Roller Adjuster
15	101186	Roller Guide Washer
16	100416-3	Ball Bearing
17	101177	Eccentric Roller Axle
18	101178	Roller Axle
19	101300	Hex Nut
20	100406-2	Ball Bearing
21	101179	Roller Axle
22	101180	Roller Support - Idle End
23	100017-1	Hex Nut - 1/4 - 20
24	M-425	Blade Brush Angle
25	100073-3	Bolt - 1/4 - 20 x 1/2
26	M-426	Blade Brush
27	100034-3	Set Screw - 5/16 - 18 x 3/8
28	100004-22	Cap Screw - 5/16 - 18 x 1-1/2 - Hex Head
29	F-248	Blade Brush Bracket
30	101992	Spacer
	102051	Roller Guide Ass'y Comp. - Idle End - Incl. Bracket, Adjuster, Roller Support, Bearings and Fastenings
	101521	Roller Support Ass'y - Idle End - Incl. Items 15 thru 22
	101909	Roller Guide Ass'y Comp. - Drive End - Incl. Bracket, Adjuster, Roller Support, Bearings and Fastenings
	101365	Roller Support Ass'y - Drive End - Incl Items 9,11 and 15 thru 18
	101998	Blade Brush Ass'y Comp. - Incl. Items 23 thru 27 and 29
	101615	Blade Brush and Angle Ass'y. - Incl. Items 23 thru 26

ALWAYS GIVE MODEL NUMBER AND SERIAL NUMBER WHEN ORDERING REPAIR PARTS

GEAR BOX AND DRIVE DETAILS



Always give model number, serial number and part number when ordering repair parts.

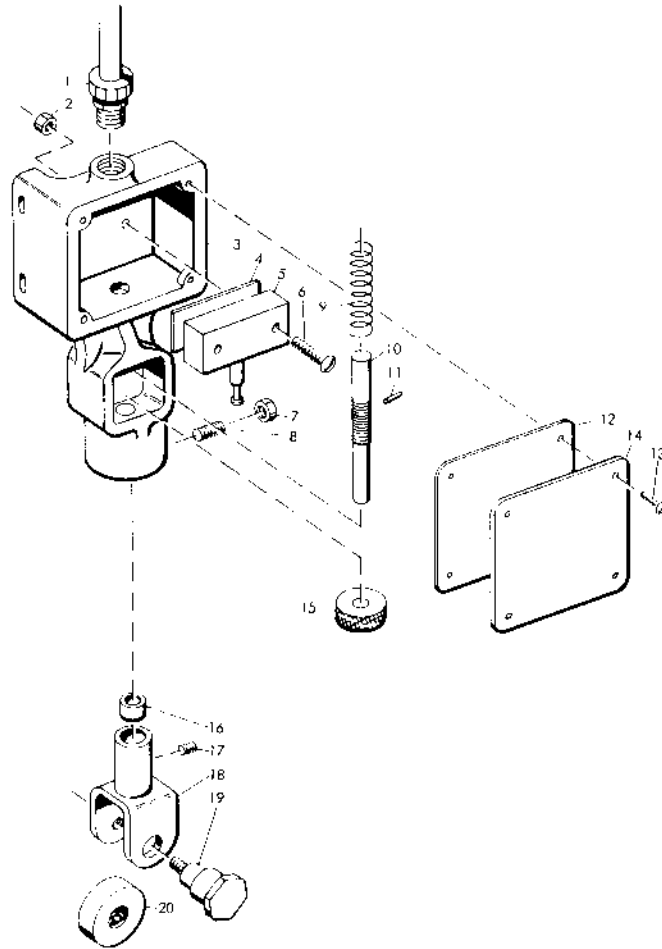
GEAR BOX AND DRIVE DETAILS

PARTS LIST

REF NO.	PART NUMBER	DESCRIPTION
1	100211-10	Pipe Plug - 1/8 - Socket Head
2	102030	Drive Pinion
3	100053-7	Roll Pin - 7/32 x 1-3/8
4	F-13	Gear Case
5	101914	Drive Shaft
6	100056-10	Square Key - 3/16 x 3/16 x 1
7	100068-5	Snap Ring
8	100403-3	Ball Bearing
9	F-271	Bearing Spacer
10	F-96	Intermediate Gear - Plastic
11	F-27	Gear Case Cover
12	100025-1	Lock Washer - 1/4
13	100000-30	Machine Screw - 1/4 - 20 x 2-1/2 - Round Head
14	100000-24	Machine Screw - 1/4 - 20 x 3/8 - Round Head
15	101426	Belt Guard
16	100017-2	Hex Nut - 5/16 - 18
17	100025-2	Lock Washer - 5/16
18	100056-14	Square Key - 3/16 x 3/16 x 1-1/2
19	100034-3	Set Screw - 5/16 - 18 x 3/8
20	104557-1	Pulley - Motor
21	100066-5	"V" Belt
22	101156	Pulley - Driven
23	100056-15	Square Key - 3/16 x 3/16 x 1-7/8
24	100056-1	Square Key - 1/8 x 1/8 x 3/4
25	100405-2	Ball Bearing
26	F-97	Pinion
27	101189	Pulley Shaft
28	100414-3	Ball Bearing
29	101159	Motor Post
30	106115	Motor Plate
31	100004-14	Cap Screws - 5/16 - 18 x 1 - Hex Head
32	F-54	Pivot Post Washer
33	100004-35	Cap Screw - 1/2 - 13 x 1 - Hex Head
34		1-1/2 H.P. Motor - Give Comp. Electrical Specs.
	102027	Gear Box Ass'y - Incl. Items 1 thru 13 and 24 thru 28
	101914	Drive Shaft and Pinion Ass'y - Incl. Items 1, 2, 3, and 5
	101916	Pulley Shaft and Pinion Ass'y - Incl. Items 24 thru 28

ALWAYS GIVE MODEL NUMBER AND SERIAL NUMBER WHEN ORDERING REPAIR PARTS

MICRO SWITCH CONTROL DETAILS

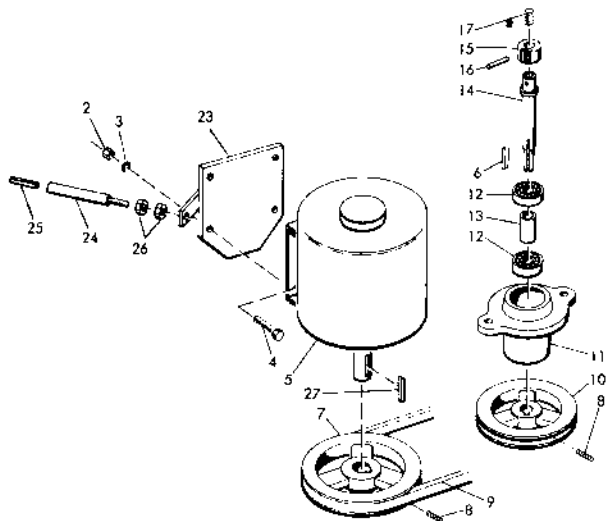


PARTS LIST

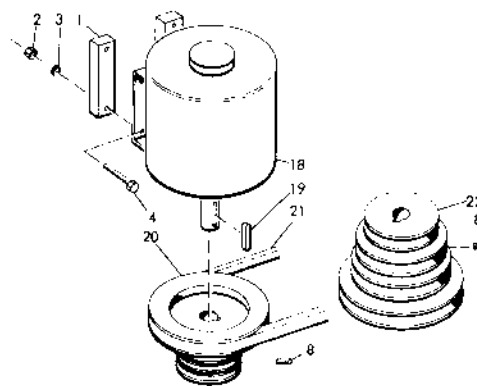
REF. NO.	PART NUMBER	DESCRIPTION
1	100605-1	Connector
2	100015-5	Hex Nut - #6 - 32
3	101370	Micro Switch Housing
4	101381	Spacer
5	100543	Micro Switch
6	100000-56	Machine Screw - #6 - 32 x 1-1/8 Round Head
7	100017-1	Hex Nut - 1/4 - 20
8	100039-3	Set Screw - 1/4 - 20 x 5/8
9	101369	Micro Switch Spring
10	101373	Roller Yoke Upper Shaft
11	100053-4	Roll Pin - 3/32 x 5/16
12	101363	Gasket
13	100000-10	Machine Screw - #8 - 32 x 5/16 Round Head
14	101379	Housing Cover
15	101374	Adjusting Nut
16	101387	Spacer
17	100034-9	Set Screw - #10 - 32 x 1/4
18	101371	Roller Yoke
19	101372	Roller Axle
20	100406-2	Ball Bearing
	101368	Micro Switch Control Assy. Complete - Includes Items 2 Thru 20

ALWAYS GIVE MODEL NUMBER AND SERIAL NUMBER WHEN ORDERING REPAIR PARTS

OPTIONAL BLADE SPEED DRIVE DETAILS



FOR 1800 F.P.M.



FOR 80-125-200-850 F.P.M.

PARTS LIST

REF. NO.	PART NUMBER	DESCRIPTION
1	106118-1	Spacer Bar
2	100017-2	Hex Nut - 5/16 - 18
3	100025-2	Lock Washer - 5/16
4	100004-22	Cap Screw - 5/16 - 18 x 1-1/2 Hex Head
5		3 H.P. Motor - Give Complete Electrical Specs.
6	100056-12	Square Key - 3/16 x 3/16 x 1-1/4
7	103074-2	Pulley - Motor
8	100034-3	Set Screw - 5/16 - 18 x 3/8
9	100067-7	"V" Belt
10	103075-1	Pulley - Driven
11	F-174	Pulley Shaft Housing
12	100403-3	Ball Bearing
13	F-176	Spacer
14	101427	Pulley Shaft
15	102030	Drive Pinion
16	100053-7	Roll Pin - 7/32 x 1-3/8
17	100211-10	Pipe Plug
18		2 H.P. Motor - Give Complete Electrical Specs.
19	100056-14	Square Key - 3/16 x 1-1/2
20	104558-1	Pulley - Motor
21	100066-5	"V" Belt
22	102021	Pulley - Driven
23	106223	Motor Plate
24	106225	Brace Stud
25	100053-20	Roll Pin
26	100019-5	Hex Jam Nut - 1/2 - 13
27	100056-17	Square Key - 1/4 x 1/4 x 1-3/4
	102039	Hub Ass'y. - Includes Items 11 thru 17